



# Connected & protected infrastructure

Turtle integrates Cisco networking, security, and industrial-edge technology into the electrical and industrial systems your operations run on. Engineered, sourced, and supported as one coordinated program.

## TRUSTED

Trusted delivery from a 100-year electrical distributor.

## MODERN

Digital modernization powered by Cisco architecture.

## PROTECTED

Connected and protected infrastructure, end-to-end.

## Why connected infrastructure matters now

Every industry is connecting operational technology to information technology. That convergence produces real-time visibility, faster decisions, and unified management across teams that used to operate independently.

It also expands the cybersecurity attack surface, which is why connected infrastructure has to be **protected infrastructure** from the first design decision.

Electrical systems, network architecture, cybersecurity, and lifecycle support all need to work together as one program. Most partners cover one piece. **Turtle covers the full stack.**

### WHAT CHANGES

- + **Real-time visibility** across IT and OT systems
- + **Faster decisions** from shared, unified data
- + **Unified management** for teams that once worked in silos
- ! **A larger attack surface** that must be protected by design

### IN THIS OVERVIEW

Page 02

#### Why Cisco & the framework

Market-leading scale, plus the four operational areas that make infrastructure connected and protected.

Page 03

#### How Turtle delivers it

One coordinated engagement, with three Cisco solution areas you can route to.

Page 04

#### Industries, company, next step

Where Turtle works, what we bring, and the two paths to start a project.

CONTACT

[cisco@turtle.com](mailto:cisco@turtle.com)

Or visit [turtle.com/contact-us](https://turtle.com/contact-us) to request a 30-minute consultation.

## THE FOUNDATION

## Why Cisco

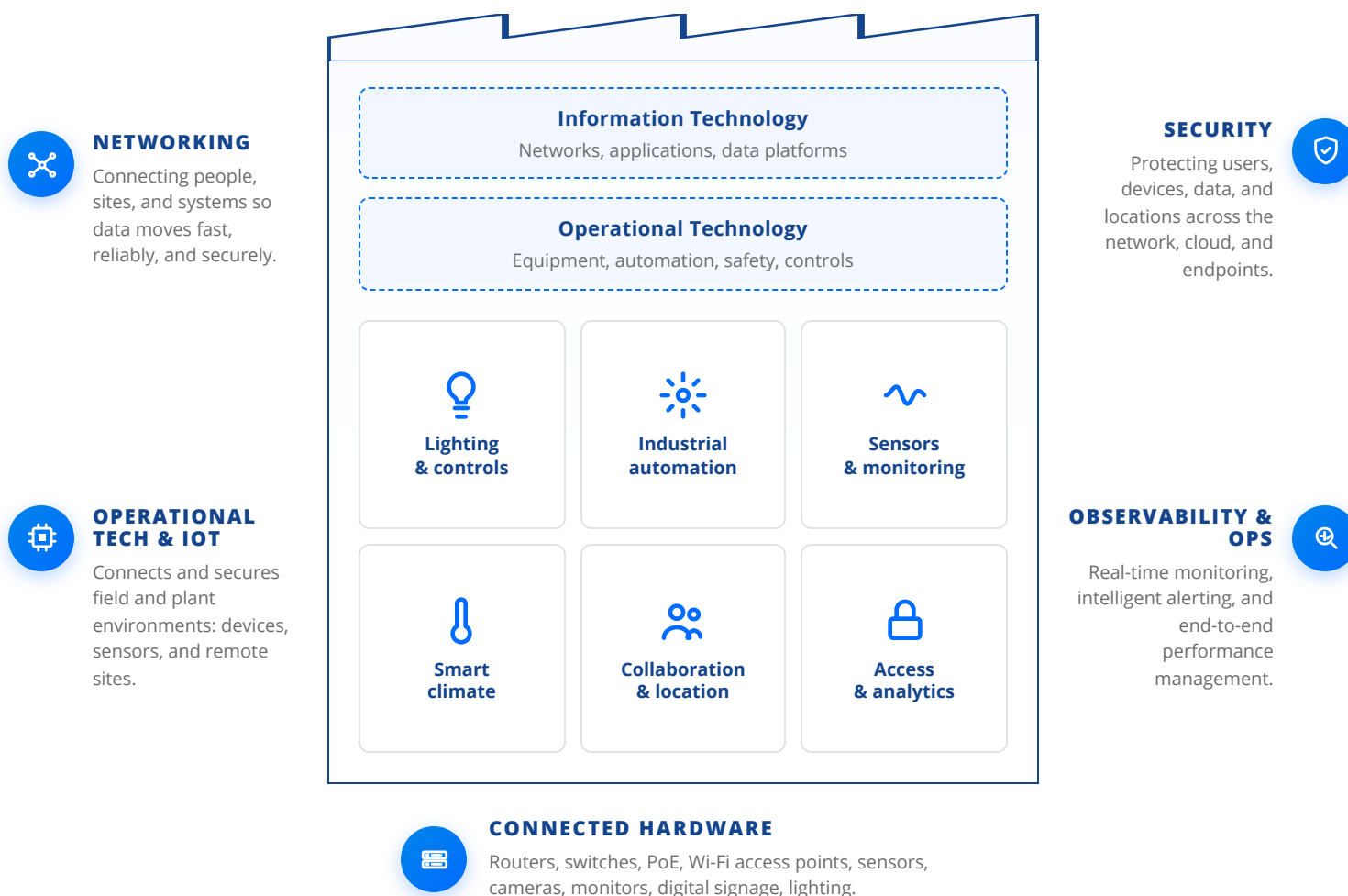
Cisco is the global leader in industrial networking and one of the most trusted names in cybersecurity. The figures below show why Cisco is the right technology foundation for connected and protected infrastructure.



## THE FRAMEWORK

## What connected and protected looks like

A connected and protected facility brings together networking, security, OT & IoT, observability, and connected hardware. Turtle integrates every layer as one coordinated engagement.



## THE DELIVERY MODEL

## How Turtle delivers it

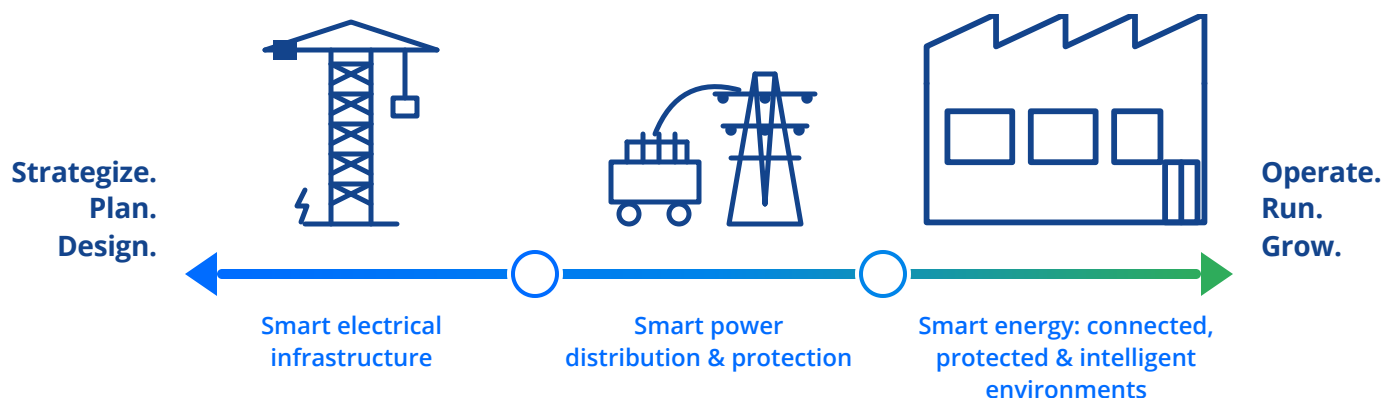
Turtle specifies, sources, and delivers the **electrical infrastructure beneath the network**, the **Cisco architecture above it**, and the **cybersecurity layer that protects both**, as a single coordinated engagement. The work covers the full lifecycle, from initial design through deployment, performance tuning, and ongoing operations support.

Turtle works directly with electrical contractors on every engagement, drawing on relationships built over decades with contractors experienced in networking, IT, and OT environments. The contractor delivers field execution. Turtle delivers the architecture, the Cisco integration, the OT cybersecurity, and the lifecycle support that keeps the system performing.

**One partner. One plan. One accountable team, from design through operations.**

## THE JOURNEY

### From strategy to operations



## THE PORTFOLIO

### Three Cisco solution areas

#### Enterprise IT & OT

Cisco infrastructure strategy that gets digital and operational priorities moving on the same plan: assessments, architecture design, and lifecycle support.

FOR CIOs · CTOS ·  
INFRASTRUCTURE LEADERS

[Learn more →](#)

#### Industrial cybersecurity

Cisco-powered protection for operational technology against expanding threats: asset visibility, segmentation, zero-trust remote access, and threat detection.

FOR SECURITY LEADERS ·  
OT DEFENDERS

[Learn more →](#)

#### Smart infrastructure

Cisco-powered networking, security, and edge for substations, manufacturing floors, smart buildings, EV networks, and data centers.

FOR FACILITY · ENERGY ·  
MODERNIZATION LEADERS

[Learn more →](#)

## THE FOOTPRINT

## Industries Turtle serves with Cisco

**Utilities & power distribution**

Substations, grid edge, smart distribution.

**Manufacturing & industrial ops**

Plant networks, OT security, edge compute.

**Transportation & transit**

Trackside, depot, and station connectivity.

**Data centers & critical infrastructure**

Core, edge, and colo modernization.

**Commercial construction**

New builds, retrofits, smart-building rollouts.

## THE COMPANY

## About Turtle

Turtle is one of the nation's largest **independent electrical and industrial distributors**. Founded in **1923** and headquartered in Clark, New Jersey, Turtle is a **Certified Women's Business Enterprise**.

The Cisco practice integrates Cisco networking, security, and industrial-edge technology directly into electrical and industrial environments, serving utilities, manufacturers, transportation authorities, data-center operators, and commercial construction owners across the United States.

**1923**

FOUNDED

**100+**

YEARS IN BUSINESS

**WBE**CERTIFIED WOMEN'S  
BUSINESS ENTERPRISE**50**

STATES SERVED

CISCO COMPETENCIES

Customer Experience

Industrial IoT

Managed Services Provider

Services Partner

## THE NEXT STEP

## Where to start

If you are planning a **new build, a retrofit, an OT cybersecurity program, or a multi-site modernization**, a project consultation is the right starting point. If you already know the hardware you need, the MyShop is the fastest path to a formal quote through an authorized Cisco supply chain.

FOR PROJECT WORK

**Request a project consultation**

A 30-minute session with a Turtle Cisco specialist. We cover your current infrastructure, the project you're planning, and a high-level view of where Turtle fits. Free, no obligation.

**Request a consultation**[turtle.com/contact-us](https://turtle.com/contact-us)

FOR PROCUREMENT

**Get a quote through MyShop**

The fastest way to source Cisco Meraki hardware and licenses. Build configurations, generate formal quotes, and purchase through an authorized Cisco supply chain backed by TD Synnex fulfillment.

**Visit Turtle Cisco MyShop**[techshop.turtle.com](https://techshop.turtle.com)