

TURTLE & HUGHES

POWERING THE WAY FORWARD

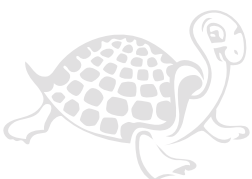
2018

Electrical Supplies



- ▶ POWER DISTRIBUTION & AUTOMATION SOLUTIONS
- ▶ ENGINEERING SERVICES
- ▶ COMMERCIAL/INDUSTRIAL LIGHTING
- ▶ ENERGY CONSERVATION
- ▶ INDUSTRIAL INFRASTRUCTURE SOLUTIONS
- ▶ DATA COMMUNICATIONS
- ▶ INTEGRATED SUPPLY CHAIN SERVICES
- ▶ GLOBAL LOGISTICS

ELECTRICAL & INDUSTRIAL DISTRIBUTION



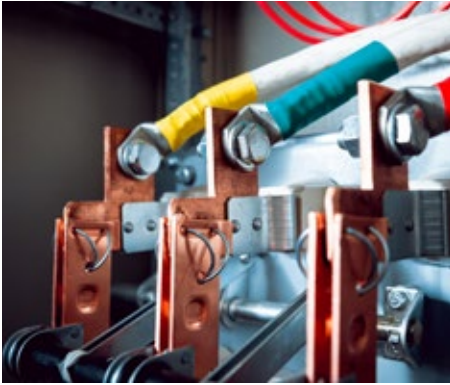
Custom Solutions

As one of the nation's largest independent electrical and industrial distributors, we add value across all components of the supply chain. Our vast product selection and access to large global inventories ensure "in-stock" quotations and prompt shipment from any of our locations nationwide. We offer customized value-added programs including: managed storerooms, convenient blanket order and replenishment agreements, consignment inventory programs, and more. Our mission today, as it has been for 95 years, is to provide the highest level of quality service and products to achieve total customer satisfaction.



**A Company
You Can Count On**
For 95 years,
a trusted partner with a
strong balance sheet
+ a solid track record

Integrity



Electrical

ALARMS, SIGNALS & ANNUNCIATORS

- + BRK Electronics
- + Broan-NuTone
- + Eaton Crouse-Hinds series
- + Federal Signal
- + Kidde
- + NSi Industries/Tork

ANCHORS & PLUGS

- + Atlas Fasteners
- + Cully/Minerallac
- + ITW Ramset
- + Metallics
- + Powers Fastening/DeWalt
- + Titan Fasteners

AUTOMATION PRODUCTS

- + ABB
- + Siemens
- + SolaHD/Emerson

BALLASTS

- + GE Lighting
- + Howard Lighting
- + Ledvance
- + Lutron
- + Philips Advance
- + Universal Lighting Technologies

BATTERIES & FLASHLIGHTS

- + Big Beam
- + Bright Star/Koehler
- + Duracell
- + Eveready
- + MAGLITE
- + Rayovac/Spectrum Brands
- + Streamlight
- + Sure-Way

BOXES & COVERS

- + Appleton/Emerson
- + Bowers/Thomas & Betts
- + Carlon/Thomas & Betts
- + Eaton Crouse-Hinds series
- + Killark/Hubbell
- + Mulberry Metal Products
- + O-Z/Gedney/Emerson
- + Pass & Seymour/LeGrand
- + Raco/Hubbell
- + Red Dot/Thomas & Betts
- + Reiker/LeGrand
- + Steel City/Thomas & Betts
- + TayMac/Hubbell

BREAKERS, PANELS, SWITCHGEAR, BUSDUCT

- + ABB
- + Asco
- + Eaton
- + Federal Pacific
- + GE Industrial Solutions
- + S&C Electric Company
- + Siemens
- + Zenith/GE

CABLE GLANDS

- + CMP Products
- + Eaton CEAG products
- + Hawke International
- + Peppers America
- + Prysmian Group

CABLE TRAY

- + Chalfant
- + Cope/Atkore
- + Eaton B-Line series
- + Kindorf/Thomas & Betts
- + MP Husky
- + PW Cable Tray/LeGrand
- + Wiremold/LeGrand

CONDUIT, RACEWAY

- + AFC/Atkore
- + Alfex/Southwire
- + Allied Tube & Conduit/Atkore
- + Anamet Electrical Sealrite
- + Calpipe Industries/Atkore
- + Cantex
- + Carlon/Thomas & Betts
- + Champion Fiberglass
- + Electri-Flex
- + Hoffman/Pentair
- + JM Eagle
- + Kaf-Tech/Atkore
- + KorKap
- + National Pipe & Plastics
- + Ocal/Thomas & Betts
- + Pallas Aluminum
- + Patriot Aluminum
- + Permacote
- + Queen City Plastics
- + Republic Conduit
- + Robroy Industries
- + Senator/Southwire
- + Southern Pipe
- + Wheatland Tube
- + Wiegmann/Hubbell
- + Wiremold/LeGrand

CONDUIT FITTINGS

- + AFC/Atkore
- + American Fittings
- + Appleton/Emerson

Electrical Supplies

- + Arlington Industries
- + Bridgeport Fittings
- + Cantex
- + Carlon/Thomas & Betts
- + Cully/Minerallac
- + Eaton B-Line series
- + Eaton Crouse-Hinds series
- + ECN Kornis
- + Caddy/Pentair
- + KorKap
- + Krayloy
- + Madison Electric
- + Midwest Electric Products
- + Myers
- + Ocal/Thomas & Betts
- + Patriot Aluminum
- + Permacote
- + Red Dot/Thomas & Betts
- + Steel City/Thomas & Betts
- + Topaz
- + Victor Specialties

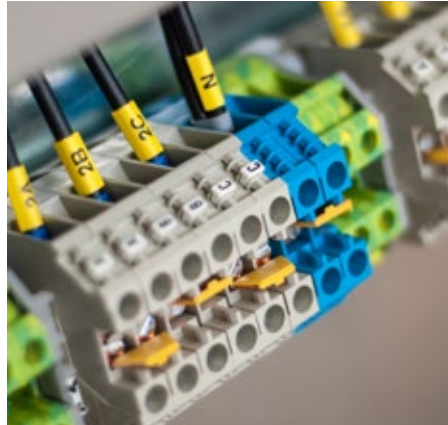
CORD CONNECTORS

- + Anderson Power
- + Appleton/Emerson
- + Arlington Industries
- + Bryant/Hubbell
- + Eaton Crouse-Hinds series
- + Hubbell Wiring Device-Kellems
- + Joy
- + Leviton Mfg. Co.
- + Russellstoll/Thomas & Betts
- + Thomas & Betts/ABB
- + Woodhead/Molex

DIMMING CONTROLS

- + Bryant/Hubbell
- + Crestron
- + Hubbell Control Solutions
- + Hunt
- + Ideal Industries

- + LC&D
- + Leviton Mfg. Co.
- + Lightolier/Philips
- + Lutron
- + Sensor Switch
- + Wattstopper/Legrand



ELECTRICAL TOOLS

- + Arrow
- + Burndy/Hubbell
- + Cembre
- + DeWalt
- + Greenlee Textron
- + Ideal Industries
- + Klein Tools
- + Milwaukee Electric Tool
- + Rack-A-Tiers
- + Ridgid
- + Rotosplit
- + Seatek/Southwire
- + SOG Specialty Knives & Tools
- + Thomas & Betts/ABB

ENCLOSURES

- + Adalet
- + Appleton/Emerson
- + Austin Electrical Enclosures
- + Eaton B-Line series
- + Eaton Crouse-Hinds series
- + Electrical Box & Enclosure/E-Box

- + Hoffman/Pentair
- + Hope
- + Killark/Hubbell
- + McKinstry
- + Nelson
- + Perfect-Line/Thomas & Betts
- + Rittal Corp.
- + Robroy Industries
- + Rose Enclosure Systems
- + Spring City
- + Stahlin
- + Thomas & Betts/ABB
- + Unity Manufacturing
- + Vynckier Enclosure Systems
- + Wiegmann/Hubbell

FANS

- + Airmaster Fan Co.
- + Broan-NuTone
- + Emerson Electric Co.
- + Leading Edge/Marley
- + Panasonic
- + Patton
- + TPI/Corporation

FUSES, HOLDERS & TERMINAL BLOCKS

- + Acme Electric
- + Buchanan/Ideal Industries
- + Eaton Bussmann series
- + Eaton Cooper Power series
- + Edison
- + Entelec
- + Ferraz Shawmut/Mersen
- + Littelfuse
- + Marathon Specialty Products

GENERATORS, UPS SYSTEMS

- + Eaton
- + GE Industrial Solutions
- + Generac Power Systems
- + Hammond Power Solutions

- + Honeywell Generators
- + Liebert

GROUNDING

- + Blackburn/Thomas & Betts
- + Burndy/Hubbell
- + Cadweld/Pentair
- + Erico/Pentair
- + Galvan Industries
- + Greaves
- + IIsco
- + Panduit
- + Priority Wire & Cable
- + thermOweld/Burndy
- + Thomas & Betts/ABB

HEAT SHRINK

- + 3M
- + AlphaWire
- + Elastimold/Thomas & Betts
- + Ideal Industries
- + Panduit
- + Raychem/Pentair
- + Thomas & Betts/ABB

HEATING

- + Air King Ventillation
- + Broan-NuTone
- + Chromalox
- + Dimplex
- + Fostoria Industries
- + Kidde Fenwal
- + Markel Products/TPI
- + QMark/Marley
- + Raychem
- + Raywall Products/TPI

LAMPS

- + Acculamp/Acuity
- + Cree
- + EYE Lighting

- + GE Lighting
- + Ledvance/Sylvania
- + Panasonic
- + Philips Lighting
- + Satco
- + Shat-R-Shield
- + TCP Lighting
- + Toshiba
- + Ushio
- + Venture Lighting
- + Westinghouse

LIGHTING, EMERGENCY

- + Atlite/Eaton Lighting solutions
- + Chloride/Philips
- + ConTech Lighting/Leviton
- + Dual-Lite/Hubbell
- + Eaton Crouse-Hinds series
- + Emergi-Lite/Thomas & Betts
- + Encore Lighting
- + Evenlite
- + Holophane/Acuity
- + LightAlarms
- + Lithonia Lighting/Acuity
- + Pathway Lighting
- + Prescolite/Hubbell
- + Siltron
- + Sure-Lites/Eaton Lighting solutions

LIGHTING, FLOURESCENT

- + Alera Lighting/Hubbell
- + Apogee Translite
- + Bartco Lighting
- + Columbia Lighting/Hubbell
- + Coronet Lighting
- + Day-Brite/Philips
- + Finelite
- + Focal Point Lighting
- + H.E. Williams
- + Holophane/Acuity

- + Lightolier/Philips
- + Linear Lighting
- + Litecontrol
- + Lithonia Lighting/Acuity
- + Lumark/Eaton Lighting solutions
- + Mercury Lighting
- + Metalux/Eaton Lighting solutions
- + Neo-Ray/Eaton Lighting solutions
- + Paramount Industries
- + Peerless Lighting
- + Simkar Corporation
- + Zumtobel



LIGHTING, HIGH BAY

- + Abolite
- + Apogee Translite
- + Day-Brite/Philips
- + Dialight
- + GE Lighting
- + Holophane/Acuity
- + Hubbell Lighting
- + Lithonia Lighting/Acuity
- + LSI Abolite
- + Lumark/Eaton Lighting solutions
- + Mercury Lighting
- + Metalux/Eaton Lighting solutions
- + Simkar Corporation
- + Stonco/Philips
- + Thomas Lighting
- + Topaz

LIGHTING, INCANDESCENT

- + Appleton/Emerson
- + Eaton Crouse-Hinds series
- + Fostoria Industries
- + Halo/Eaton Lighting solutions
- + Juno Lighting
- + Kenall
- + Kichler Lighting
- + Kurt Versen/Hubbell
- + Lightolier/Philips
- + Phoenix Lighting
- + Prescolite/Hubbell
- + Progress Lighting/Hubbell
- + RAB Lighting
- + Stonco/Philips



LIGHTING, LED

- + Alera Lighting/Hubbell
- + Apogee Translite
- + Bartco Lighting
- + Bega
- + Color Kinetics/Philips
- + Columbia Lighting/Hubbell
- + Corelite/Eaton Lighting solutions
- + Coronet Lighting
- + Cree
- + DMF Lighting
- + Dual-Lite/Hubbell
- + Emergi-Lite/Thomas & Betts
- + Encore Lighting

- + Epic
- + Focal Point Lighting
- + Halo/Eaton Lighting solutions
- + Hubbell Lighting
- + Ledalite/Philips
- + Lightolier/Philips
- + Linear Lighting
- + Litecontrol
- + Lithonia/Acuity
- + Lumark/Eaton Lighting solutions
- + Lunera
- + Mercury Lighting
- + Metalux/Eaton Lighting solutions
- + Prescolite/Hubbell
- + Progress Lighting/Hubbell
- + RAB Lighting
- + Topaz
- + Toshiba

LIGHTING, OUTDOOR

- + AAL/Hubbell
- + Appleton/Emerson
- + Cree
- + Eaton Crouse-Hinds series
- + Emco/Philips
- + GE Lighting
- + Hadco/Philips
- + Holophane/Acuity
- + Hubbell Outdoor Lighting
- + Hydrel/Acuity
- + Kichler Lighting
- + Kim Lighting/Hubbell
- + Lithonia/Acuity
- + Lumark/Eaton Lighting solutions
- + Progress Lighting/Hubbell
- + RAB Lighting
- + Spaulding/Hubbell
- + Sternberg Lighting
- + Sterner Lighting/Hubbell
- + Stonco/Philips

- + Sun Valley/US Architectural Lighting
- + Wide-Lite/Philips

LIMIT, TEMPERATURE & PROXIMITY SWITCHES

- + Eaton Cutler-Hammer
- + Honeywell
- + Pepperl + Fuchs
- + Turck

LUGS & TERMINALS

- + 3M
- + Blackburn/Thomas & Betts
- + Buchanan/Ideal Industries
- + Burndy/Hubbell
- + Cembre
- + Dossert/AFL
- + Greaves
- + Ilsco
- + NSi Industries
- + Panduit
- + Penn Union
- + Thomas & Betts/ABB



METERING EQUIPMENT

- + ABB
- + Eaton B-Line series
- + Eaton Cutler-Hammer
- + E-Mon
- + GE Industrial Solutions

- + Landis + Gyr
- + Milbank Mfg. Co.
- + Siemens

MOTOR CONTROL

- + ABB
- + Eagle Signal
- + Eaton Cutler-Hammer
- + GE Industrial Solutions
- + Moeller
- + Linemaster
- + Siemens

MOTORS, AC & DC DRIVES

- + ABB
- + Baldor
- + Basler
- + Benshaw
- + Boston Gear
- + Eagle Signal
- + Eaton Cutler-Hammer
- + GE Industrial Solutions
- + Marathon Electric
- + Toshiba

NETWORKING

- + Hirschmann Electronics
- + Molex
- + Panduit
- + IntraVUE

POLE LINE PRODUCTS

- + AB Chance/Hubbell Power Systems
- + Anderson Power Products
- + Buckingham Manufacturing
- + Fargo/Hubbell Power Systems
- + G&W Electric
- + McGraw Edison
- + Ohio Brass/Hubbell Power System
- + Olflex/Lapp
- + Porcelain Products

PROGRAMMABLE CONTROLLERS

- + ABB
- + Cincinnati ElectroSystems
- + Eaton Cutler-Hammer
- + GE Industrial Solutions
- + Klocker-Moeller
- + Siemens

RELAYS

- + ABB
- + Agastat
- + Eaton Cutler-Hammer
- + GE Industrial Solutions
- + Joslyn Clark
- + Magnecraft
- + Struthers-Dunn
- + Potter Brumfield
- + R-K Electronics
- + Siemens

STRUT/CHANNEL

- + Eaton B-Line series
- + Globe Strut
- + Hayden
- + Kindorf/Thomas & Betts
- + Michigan Hanger
- + Power-Strut/Atkore
- + Superstrut/Thomas & Betts
- + Unistrut/Atkore
- + US Strut
- + Versabar

TEST EQUIPMENT

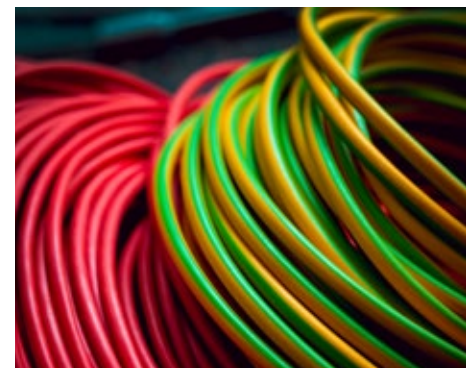
- + Amprobe
- + Fluke
- + Greenlee Textron
- + Harris
- + Ideal Industries
- + Klein Tools
- + Milwaukee Tool

TIME CLOCKS

- + Aube Technologies
- + Intermatic Inc.
- + Paragon Electric
- + Precision Multiple Controls
- + Sangamo
- + Tork/NSi Industries

TRANSFORMERS

- + ABB
- + Acme Electric
- + Dongan
- + Eaton
- + Federal Pacific
- + GE Industrial Solutions
- + Hammond Power Solutions
- + Jefferson Electric
- + MGM Transformer Co.
- + Micron
- + Olsun Electrics
- + SESCO
- + Sola HD/Emerson
- + Sorgel
- + Standard



WIRE, CABLE & CORD

- + Advanced Digital Cable
- + Aetna Insulated Wire
- + AFC/Atkore
- + Alcan/General Cable
- + Alfalex/Southwire



- + Alpha Wire
- + AmerCable/Nexans
- + Belden
- + Berk-Tek/Nexans
- + Brand-Rex
- + Carol Cable/General Cable
- + Cerro Wire & Cable
- + Champion Wire & Cable LLC
- + CME
- + Coleman Cable
- + Colonial Wire & Cable
- + Condumex Inc
- + Dekoron Wire & Cable
- + Draka/Prysmian Group
- + Encore Wire Corp
- + Essex/Southwire
- + General Cable
- + Hendrix
- + Hitachi
- + Honeywell Genesis
- + Kaf-Tech/Atkore
- + Kerite
- + Manhattan Cable
- + Mohawk
- + Nehring Electric Works
- + Nexans/Alcatel
- + Okonite
- + Olympic Wire & Cable
- + Optical Cable Corp.
- + Priority Wire & Cable
- + Pyrotenax
- + Remeo Wire & Cable
- + Republic Wire
- + Rockbestos
- + Senator/Southwire
- + Service Wire & Cable
- + Shawflex
- + United Copper
- + West Penn

WIRING ACCESSORIES

- + 3M
- + Etcon
- + Greenlee Textron
- + deal Industries
- + Panduit
- + Rack-A-Tiers
- + Thomas & Betts/ABB

WIRING DEVICES

- + Bryant/Hubbell
- + Eaton Wiring devices
- + Hubbell Wiring Device-Kellems
- + Leviton Mfg. Co.
- + Lutron
- + Russellstoll/Thomas & Betts
- + Wattstopper/Legrand
- + Woodhead/Molex

Founded in 1923, Turtle & Hughes is a fourth generation family-owned and employee-owned business and one of the nation's largest independent electrical and industrial distributors.

Turtle & Hughes

Headquartered in Linden, NJ, Turtle & Hughes operates from close to 20 locations with a reach that spans coast to coast. We are a significant force in the engineering and procurement of power distribution, automation, lighting and energy projects. Our newest offering, TSI Turtle Services, provides consulting and technology services that focus on the Industrial Infrastructure. We have a long history of management by women across three generations of family leadership. Today, we are one of the top 50 women-owned businesses of any kind nationwide.

Our Specialties

Power Distribution and Automation Solutions, Lighting and Renewable Energy, Industrial Control and Automation, Communications, Integrated Supply

Turtle & Hughes Integrated Supply

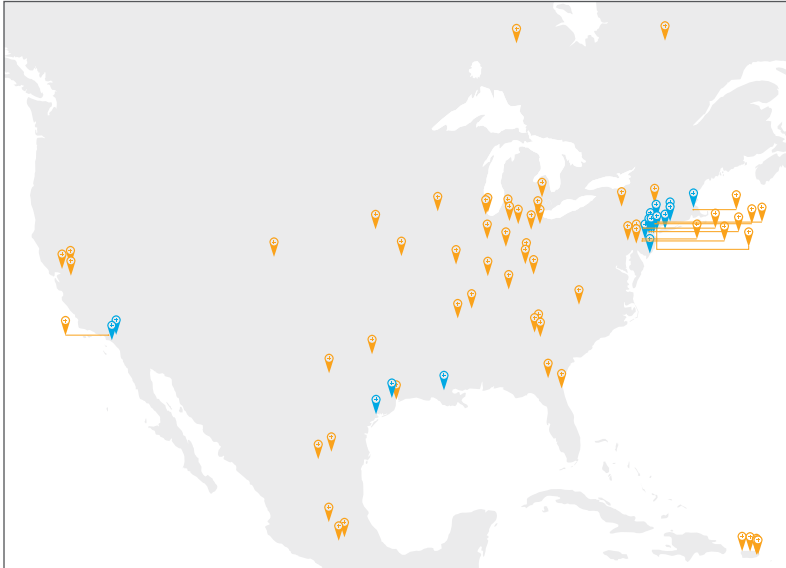
For almost 20 years, Turtle & Hughes Integrated Supply (THIS) has proven its leadership in the industrial supply market by partnering with companies to reduce their total cost of ownership. We provide world-class managed storeroom programs that continually achieve significant cost savings by streamlining the supply chain. Through tailored solutions, our customers benefit from our vast experience; high level of service; improved process efficiencies; superior product support; and in-depth data analysis. THIS operates across the U.S., and in Canada, Mexico, and Puerto Rico.



TURTLE & HUGHES

POWERING THE WAY FORWARD

Location Map



TURTLE & HUGHES
TURTLE & HUGHES INTEGRATED SUPPLY



Logistics Services

- + On-Time Delivery with GPS Tracking
- + Automated Warehouse and Real-Time Delivery Information
 - + Vendor-Managed Inventory
 - + Emergency Service 24/7/365
 - + Material Kitting and Storage
- + Project Staging with Timed Releases
- + Wire Management, Cutting, Paralleling and Stripping
 - + Centralized Purchasing
- + On-Site Trailer and Project Management
- + Customer-Specific Inventory Storage and Delivery



ELECTRICAL & INDUSTRIAL DISTRIBUTION

Corporate Headquarters

1900 Lower Road
Linden, NJ 07036
Phone: 732.574.3600
Fax: 732.574.3723

Central Distribution Center

188 Foothill Road
Bridgewater, NJ 08807
Phone: 732.560.5575
Fax: 732.560.9940

Locations

NEW JERSEY

Linden

1900 Lower Road
Linden, NJ 07036
Phone: 732.574.3600
Fax: 732.574.3723

Bridgewater

188 Foothill Road
Bridgewater, NJ 08807
Phone: 732.560.5575
Fax: 732.560.9940

Plainfield

1260 North Avenue
Plainfield, NJ 07062
Phone: 908.756.9110
Fax: 908.756.9118

Pleasantville

825 Mill Road, Unit #6
Pleasantville, NJ 08232
Phone: 609.407.1950
Fax: 609.407.9115

Whippany

68 South Jefferson Road
Whippany, NJ 07981
Phone: 973.386.1122
Fax: 973.386.9138

NEW YORK

Commack

59 Mall Drive
Commack, NY 11725
Phone: 877.324.4242
Fax: 877.324.2636

Manhattan

110 West 30th Street
New York, NY 11385
Phone: 718.941.4890
Fax: 646.869.4374

Newburgh

700 Corporate Boulevard
Newburgh, NY 12550
Phone: 877.324.4242
Fax: 732.574.3723

TEXAS

Houston

6611 Supply Row
Houston, TX 77011
Phone: 713.230.5200
Fax: 713.923.9009

Port Lavaca

2177 North Highway 35
Port Lavaca, TX 77979
Phone: 361.482.0101
Fax: 361.482.0104

CONNECTICUT

New Haven

87 Union Street
New Haven, CT 06511
Phone: 203.497.1500
Fax: 203.497.1501

CALIFORNIA

Huntington Beach

15312 Connector Lane
Huntington Beach, CA 92649
Phone: 714.379.6653
(Commercial Customers)
Phone: 562.435.3451
(Industrial Customers)
Fax: 714.379.6658

Ontario

1550 South Milliken, Suite F
Ontario, CA 91761
Phone: 909.218.8644
Fax: 909.218.8637

MASSACHUSETTS

Randolph

76 Teed Drive
Randolph, MA 02368
Phone: 617.983.9920
Fax: 617.983.9918

LOUISIANA

Geismar

6087 Commerce Pointe Drive
Geismar, LA 70734
Phone: 225.744.4503

Turtle & Hughes Integrated Supply Headquarters

2321 Whitney Avenue
Suite 501
Hamden, CT 06518
Phone: 888.353.1066
Fax: 203.497.1504

TSI Turtle Services – Technology Center

6 West Church Street
Jamesburg, NJ 08831
Phone: 732.656.0056
Fax: 732.626.9036

Please visit our websites:

turtle.com
turtleintegrated.com
tsiturtle.com